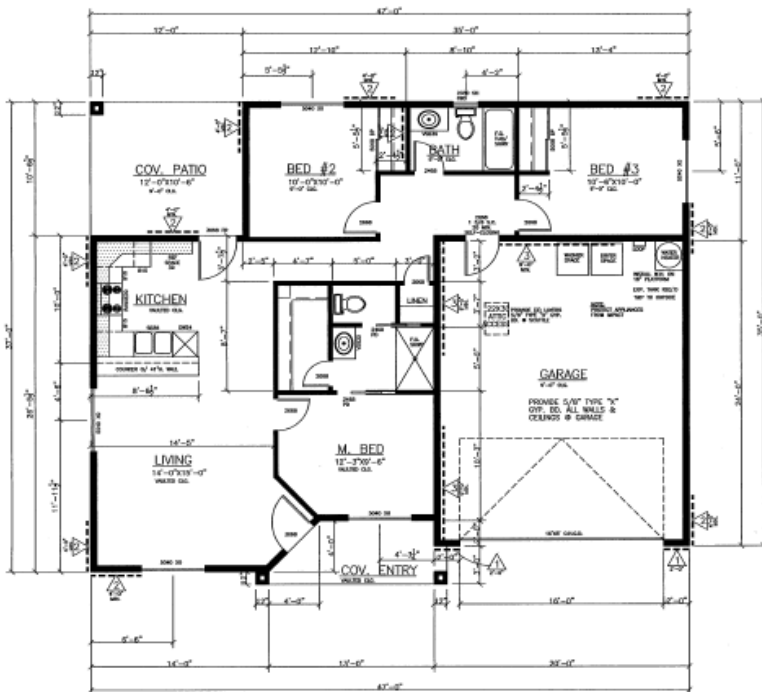




BEST VALUE IN TOWN! BUILD WITH EQUITY!

1050 Sunridge



- 3 bed / 2 bath / 2 car garage
- 1050 sq. ft. living space
- 24' deep garage
- Open floor plan w/ high ceilings
- Tile entry
- Basic Features
- Tile Roof

Trustworthy / Reliable Builder!

THE
**SANDY
NORMAN**
TEAM



REALTYONEGROUP
MOUNTAIN DESERT

(928) 854-8336



Nothing But Hope, LLC

Ken Hope (928) 566-5088
General Contractor AZ ROC #265684

